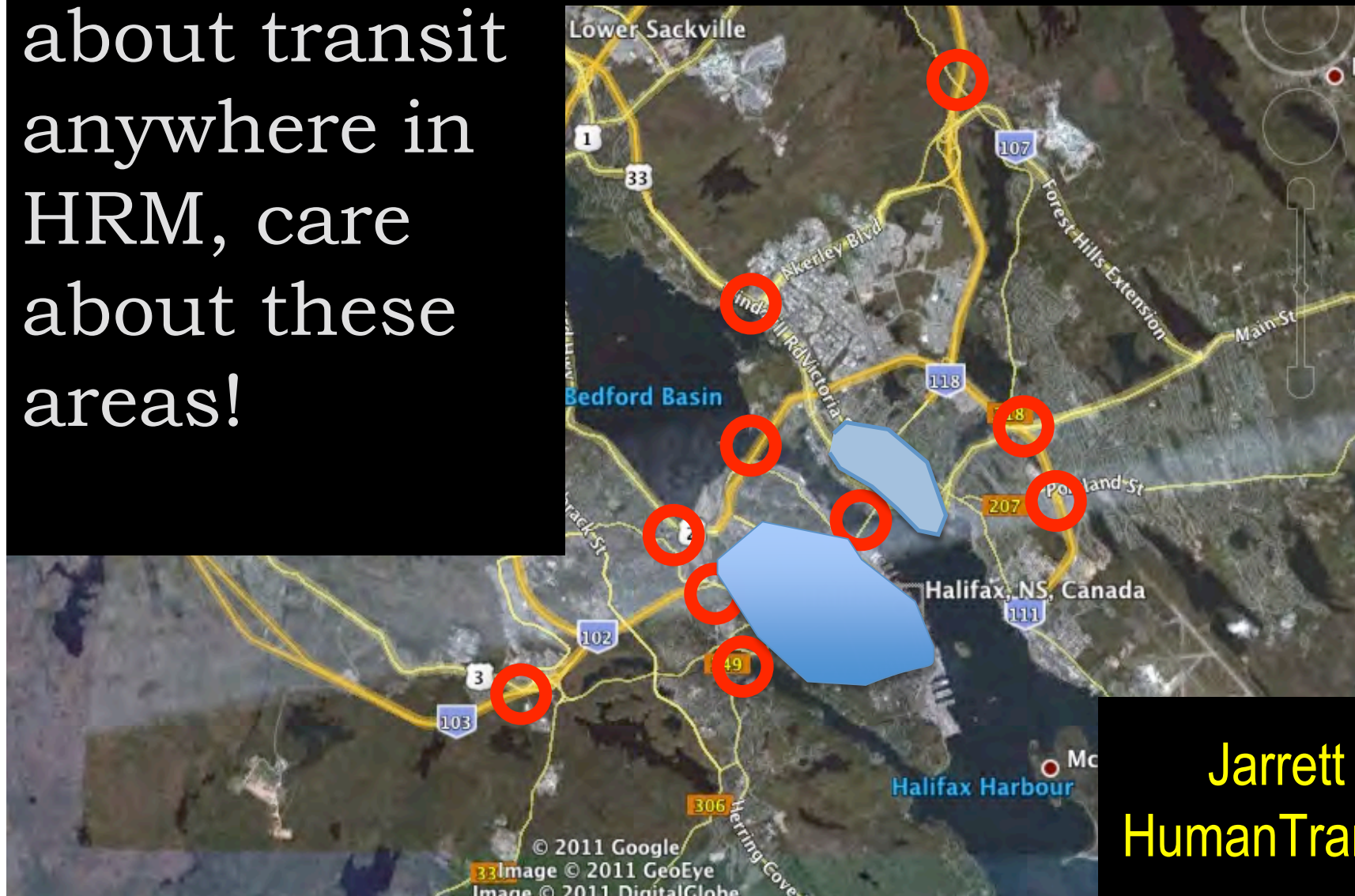
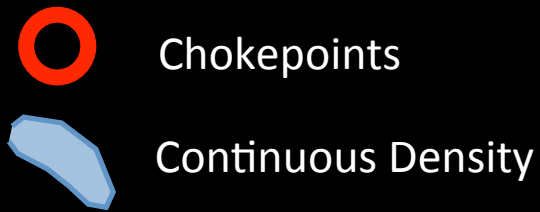


Halifax

A Transit Metropolis?

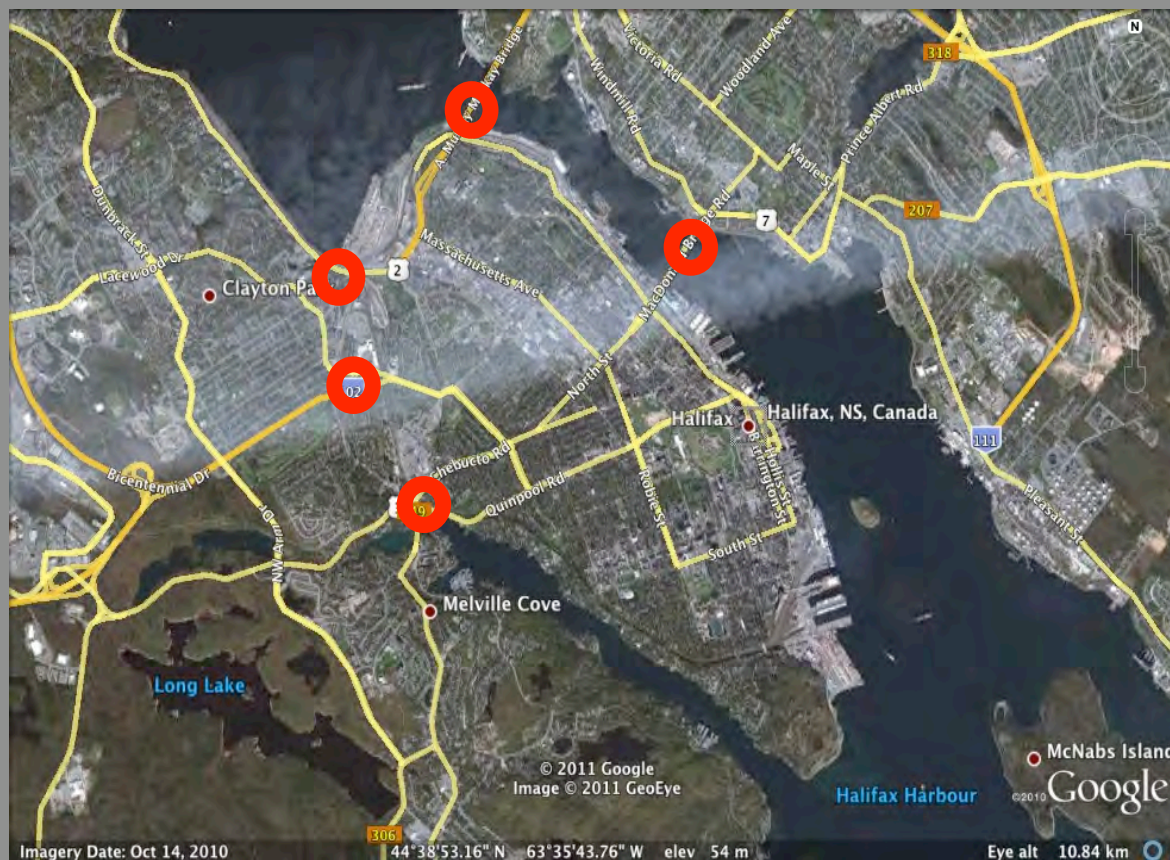
Jarrett Walker
HumanTransit.org

If you care
about transit
anywhere in
HRM, care
about these
areas!



Jarrett Walker
HumanTransit.org

So Look at the Peninsula



Continuous Historic
Grid

Nearly Continuous
High Density

Chokepoints
metering incoming
car traffic.

Jarrett Walker
HumanTransit.org

Entire HRM transit future depends on success here ...



Give transit advantage through, or bypassing, chokepoints.

Make transit EASY and OBVIOUS throughout peninsula.

Jarrett Walker
HumanTransit.org

Frequency is freedom!

If you want an easy and obvious transit system within (and to) peninsula, plan for frequency.

Jarrett Walker
HumanTransit.org

Frequency is freedom!

Frequency means:

- Less waiting.
- Go anytime.
- Fast connections → more destinations
- Simpler network (fewer lines, more service)
- Case for better transit priorities / lanes

- All day frequency starts the ball of self-reinforcing improvement rolling.

Jarrett Walker
HumanTransit.org

You've proven it ...



Recent Line 1
frequency
improvement

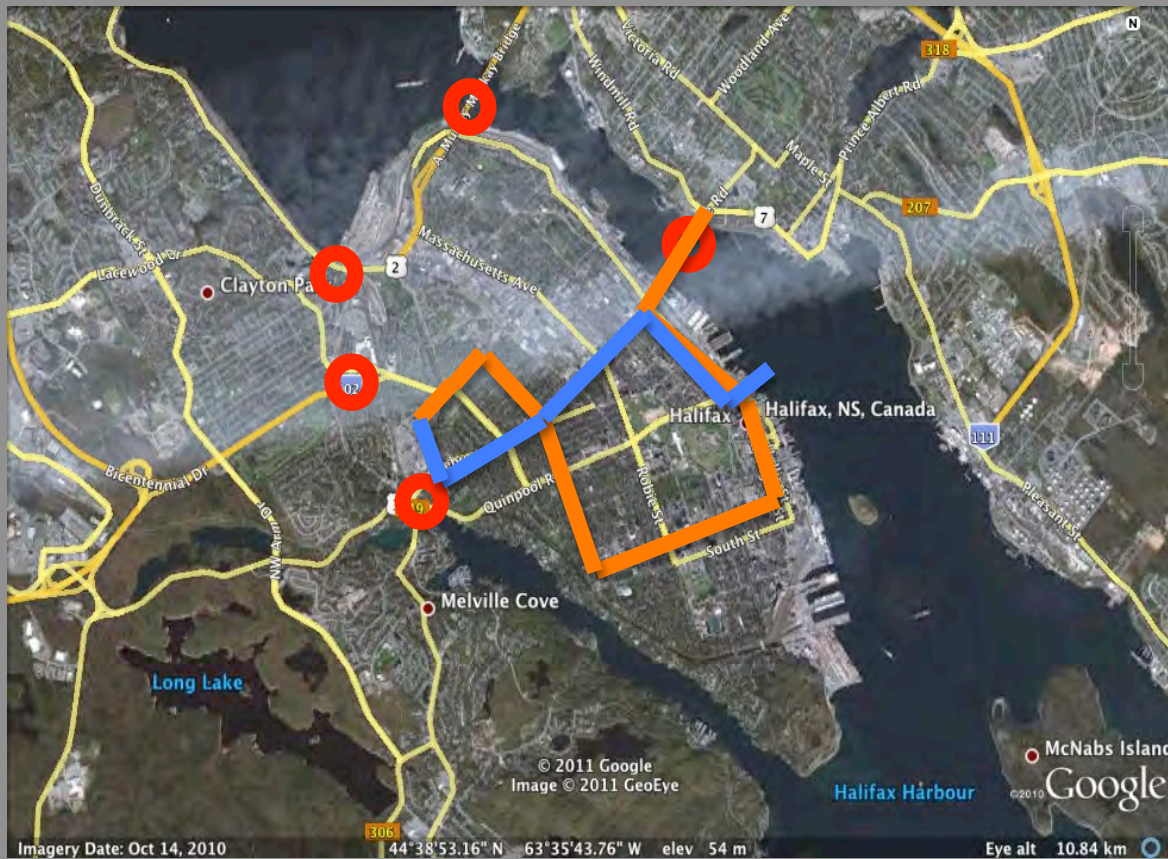
to 10 minutes
most of midday

13% increase in service cost ...

17% increase in ridership.

Jarrett Walker
HumanTransit.org

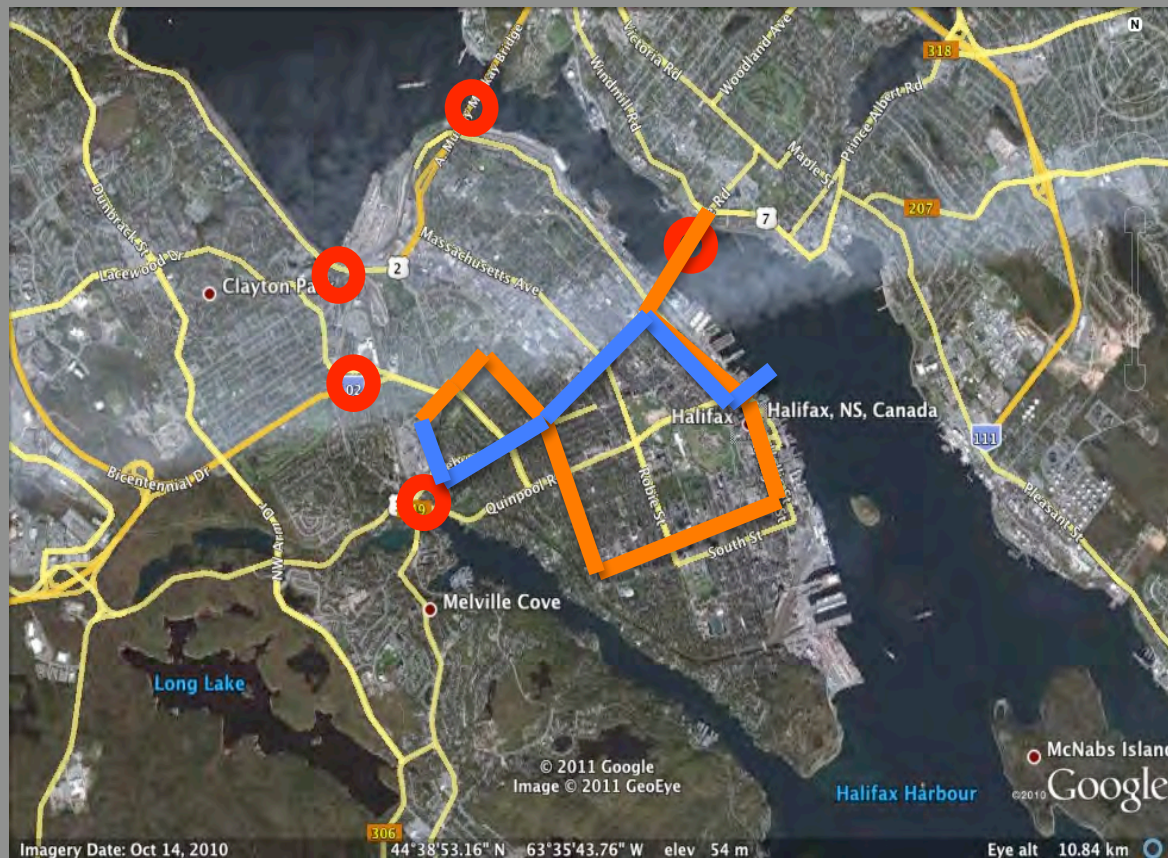
What if we had more of it?



Current segments with 15+ frequency all day.

Jarrett Walker
HumanTransit.org

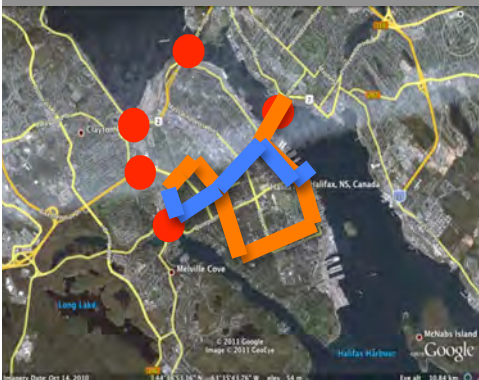
What if you knew it was there?



Did you know that this is the peninsula's 15-minute network?

Jarrett Walker
HumanTransit.org

Does this help you find it?



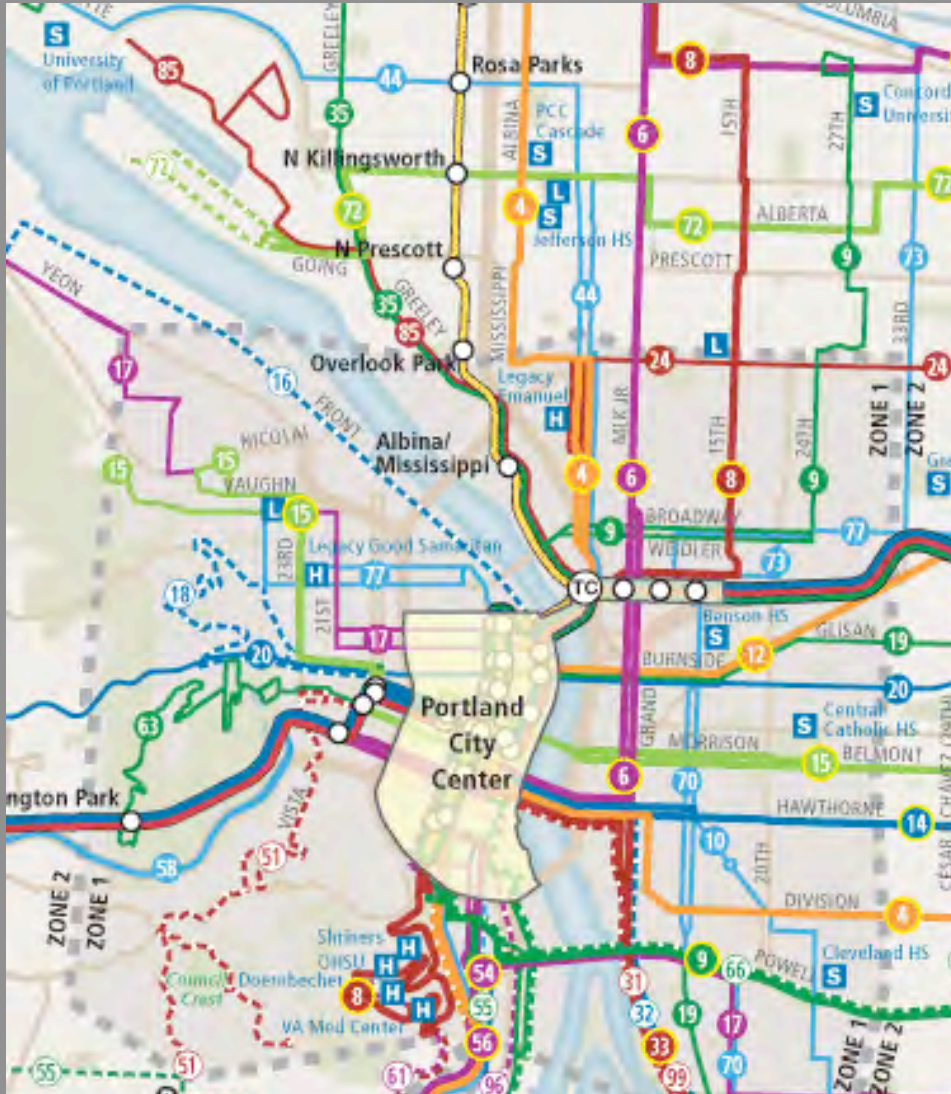
Jarrett Walker
HumanTransit.org



Does this?

Walker
isit.org

What if it were this simple?



Just one line on each street ...

BUT

lines so frequent that they're
easy to transfer to/from.

Jarrett Walker
HumanTransit.org

Why plan for connections?

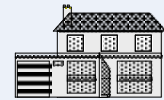
Simple example: 3 residential areas, 3 activity centres.



Residential 1



Residential 2



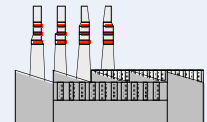
Residential 3



Activity Area 1



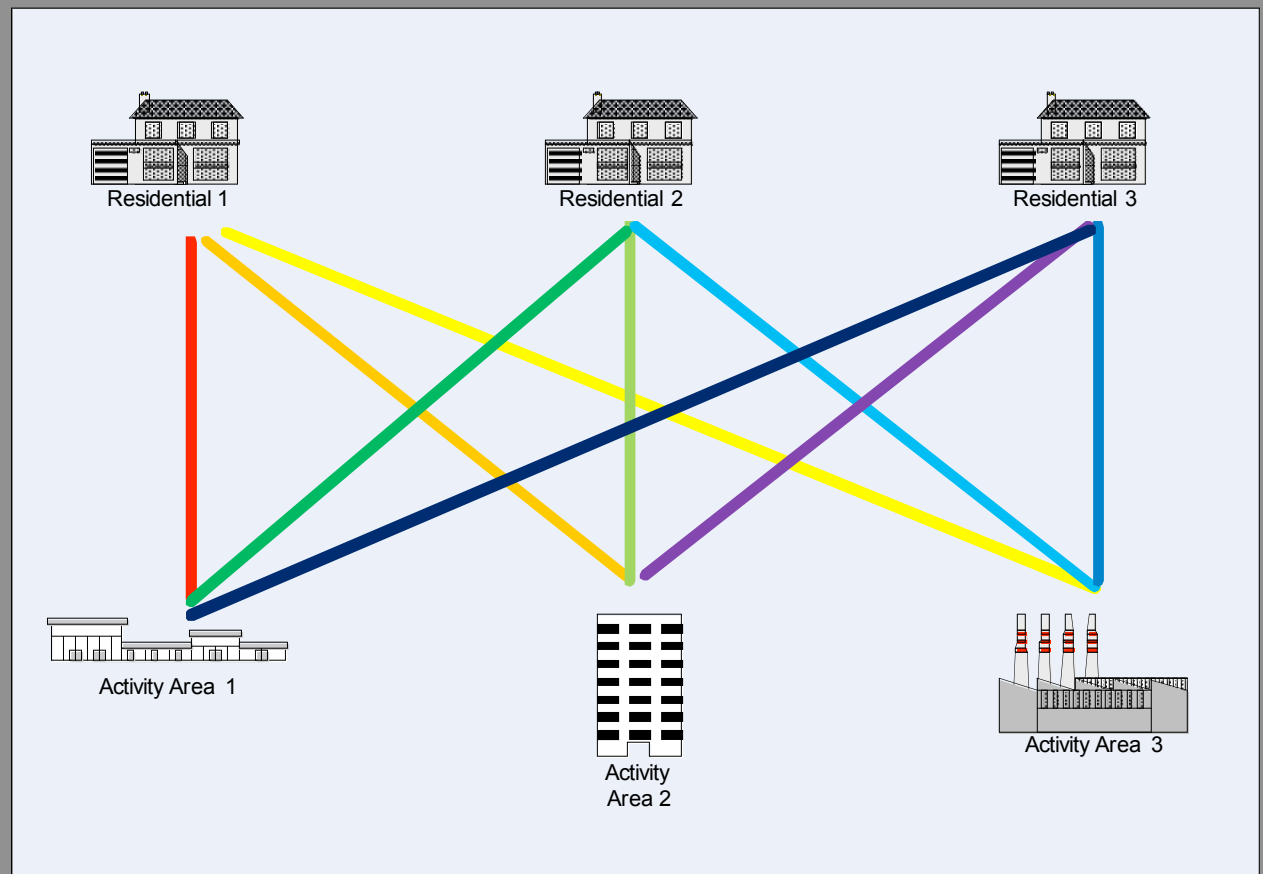
Activity Area 2



Activity Area 3

No-change option

- 9 routes
- Every 30 min.
- Each route is 20 min long

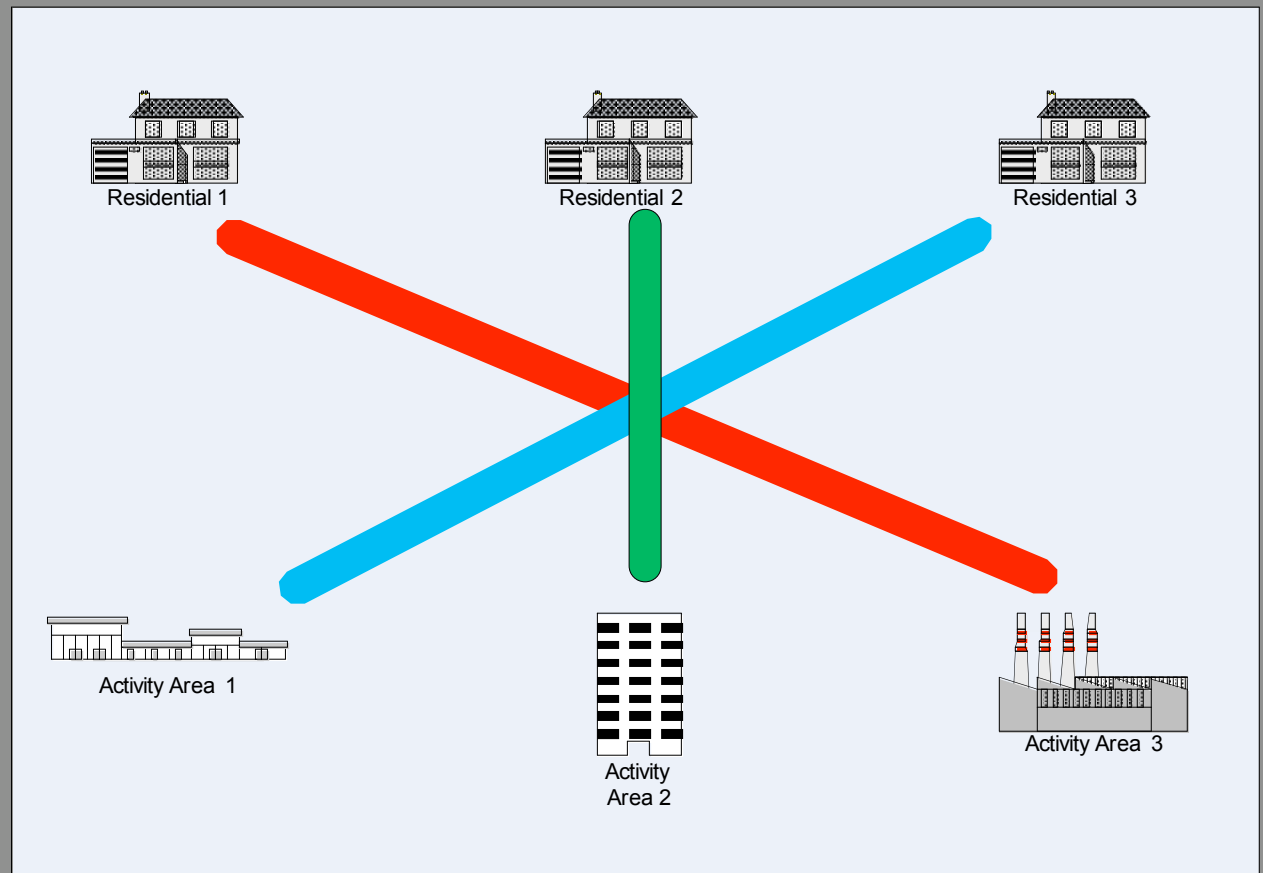


Connective, Frequent Option

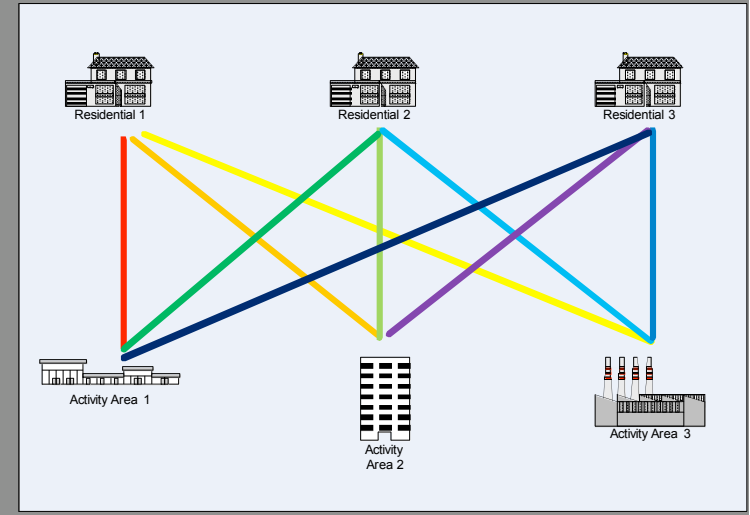
3 routes

Every 10 min.

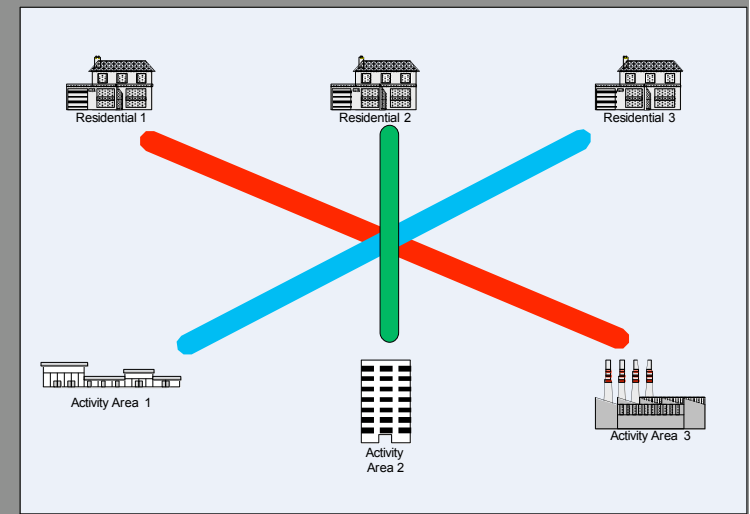
Each route
is 20 min long



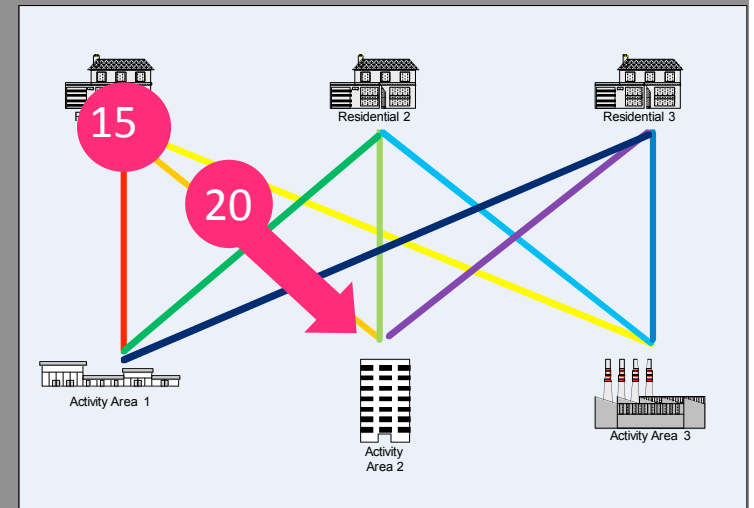
- 9 routes
- Every 30 min.



- 3 routes
- Every 10 min.



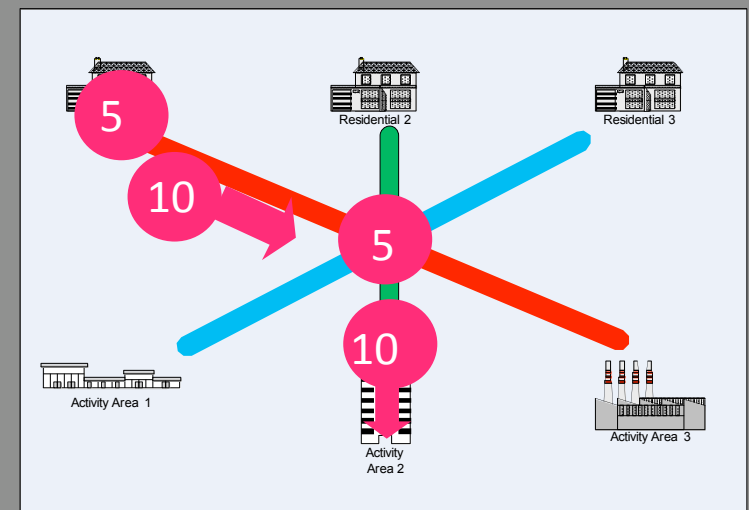
- No-change option
- Wait 15 min.
- Ride 20 min.
- 35 min.



Connective, frequent option

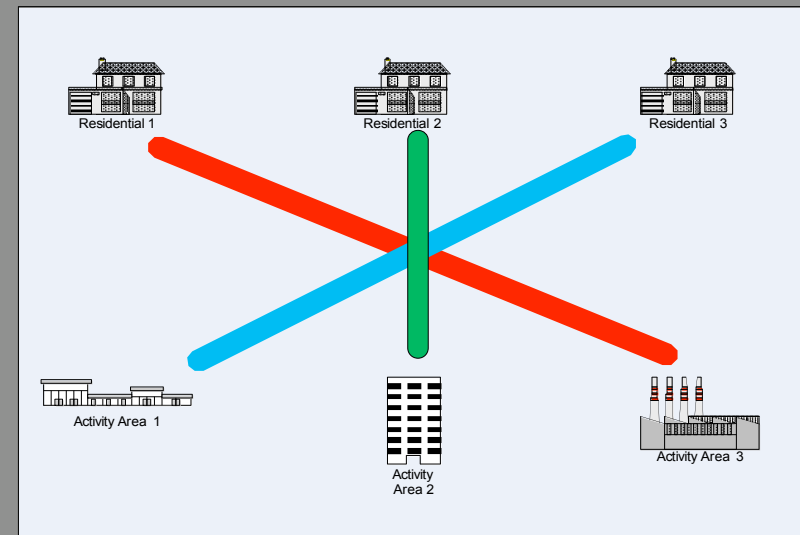
- Wait 5 min.
- Ride 10 min
- Wait 5 min.
- Ride 10 min.

30 min.



Connective Networks offer ...

- Simplicity
- Frequency
- Versatility
- Support for dense urban nodes around interchanges



There are probably enough buses on the peninsula now to provide frequent all day service on all the major streets.

But not if you try to run direct service from everywhere to everywhere.



Thank you!

Jarrett Walker

Consultant in Public Transit Planning and Policy

HumanTransit.org

jarrett@jarrettwalker.net